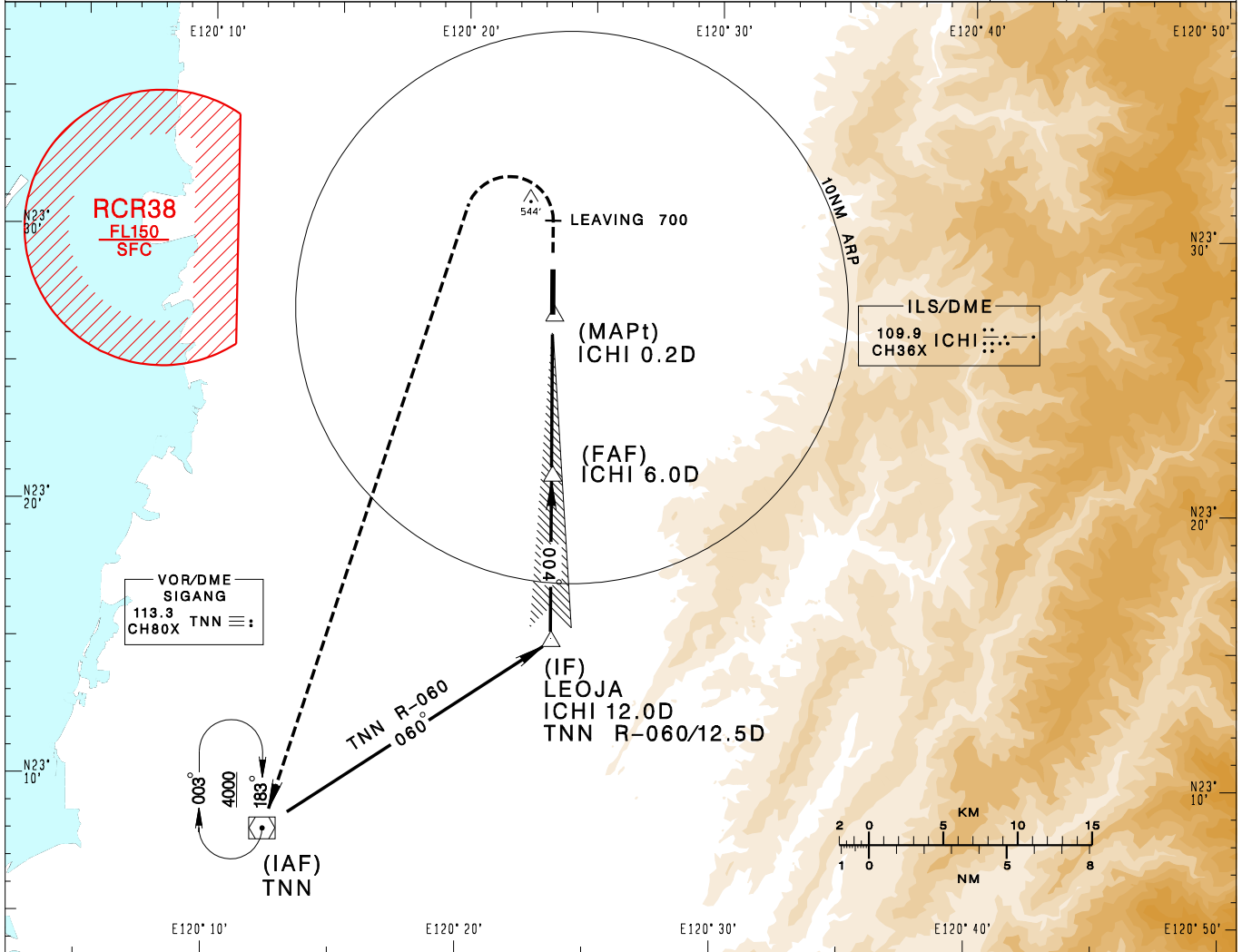


**嘉義機場**  
CHIAYI AD

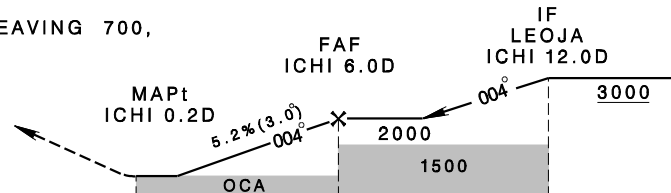
RCKU  
LOC RWY36

KAOHSIUNG APP 120.6 301.0	CHIAYI TWR 118.6 236.6 275.8	VAR 4°W-2023	13600'
Apt Elev: 85'	Rwy36 THR Elev: 85'		
BEARINGS ARE MAGNETIC; DISTANCES ARE NAUTICAL MILES; ELEVATIONS, HEIGHTS IN FEET			
MSA ARP 25NM			



DIST to ICHI	2DME	3DME	4DME	5DME	6DME
ADVISORY ALT	720	1040	1360	1680	2000

MISSED APCH:  
CLIMB ON RWY HDG UNTIL LEAVING 700,  
TURN LEFT DIRECT TO TNN.  
CLIMB TO 4000 AND HOLD.



NM FROM ICHI 5 0 5 10 15

MINIMA (OCA IN FT, VIS IN M, OCH IN FT)

CATEGORY	A	B	C	D
STRAIGHT IN	560 <sup>1200</sup> RVR1200 475		560/1600 475	
STRAIGHT IN (ALS OUT)	560/1600 475		560/2200 475	
CIRCLING	670/1900 585	720/2800 635	820/3700 735	940/4600 855

NOTE

1. CIRCLING NOT AUTHORIZED EAST OF RWY.

\*DME REQUIRED.

CHANGES: NEW CHART